

NEW

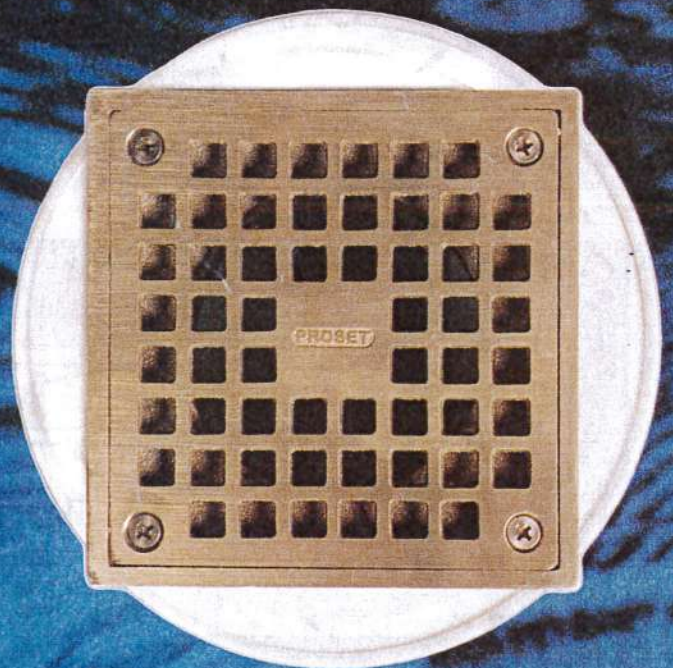
ProSet Systems, Inc.

Trap Guard™

Sewer Gas Emission Protection



Round Strainer Top



Square Strainer Top

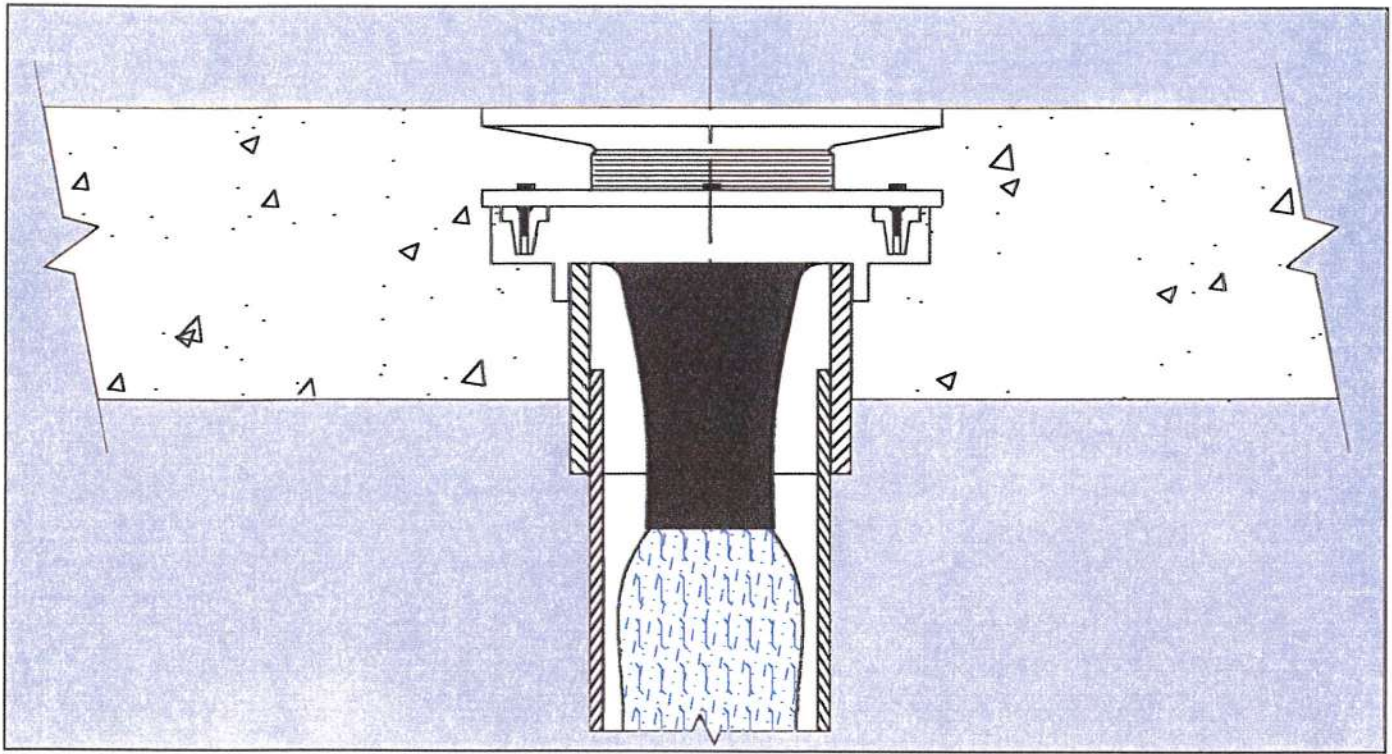
Government Spec. Floor Drains

- Prevents sewer gas emissions
- Prevents sewer backup
- Prevents trap evaporation
- Allows proper flow rates
- Durable Elastomeric material
- Will not support microbiological growth
- Simplified replacement features
- Approved by National Plumbing Codes

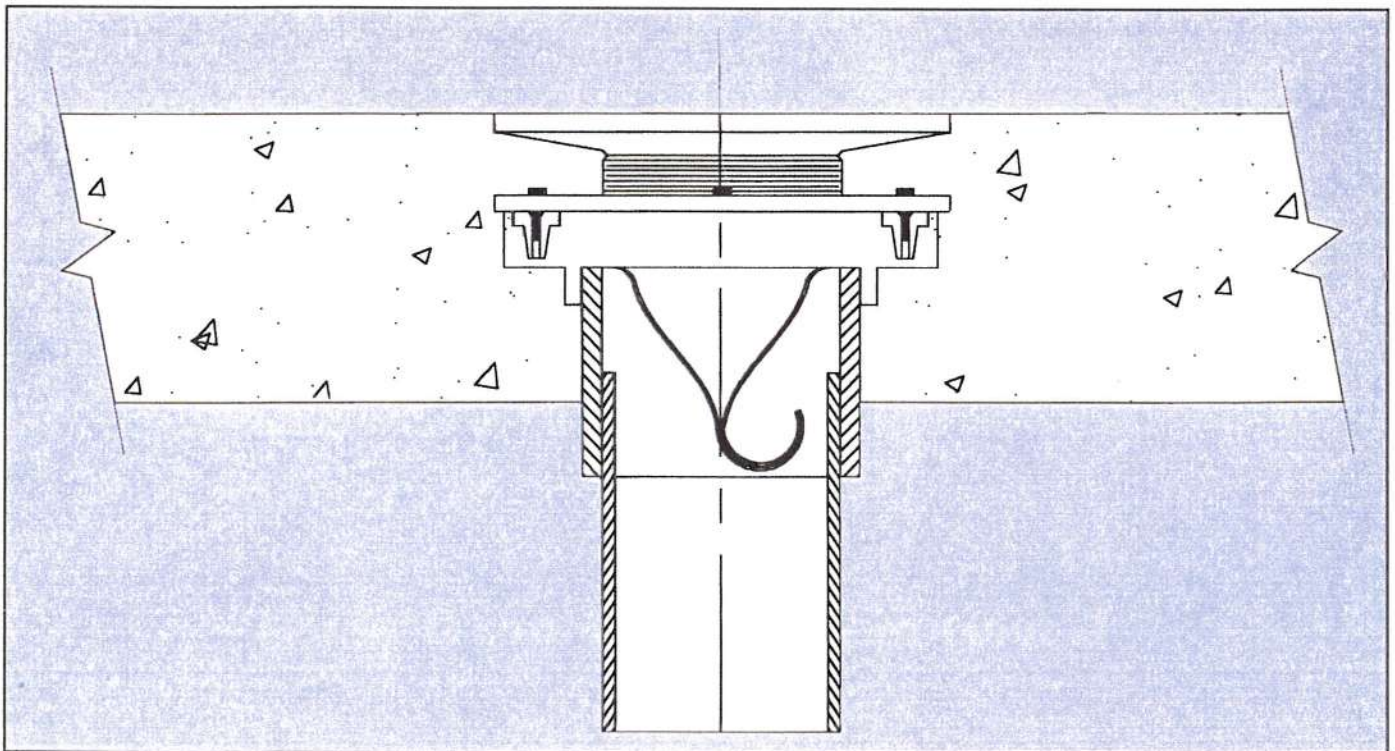
Safety Product By



Here's How It Works



The above drawing shows how the Trap Guard™ device opens when wastewater is discharged into the top of the floor drain. The device is made with a soft and flexible elastomeric material. The material is molded into the shape of a duck's bill, open on the top with a special curl closure at its bottom. The smooth, flexible Trap Guard™ surfaces allow wastewater to open and adequately discharge the fixture through its interior.



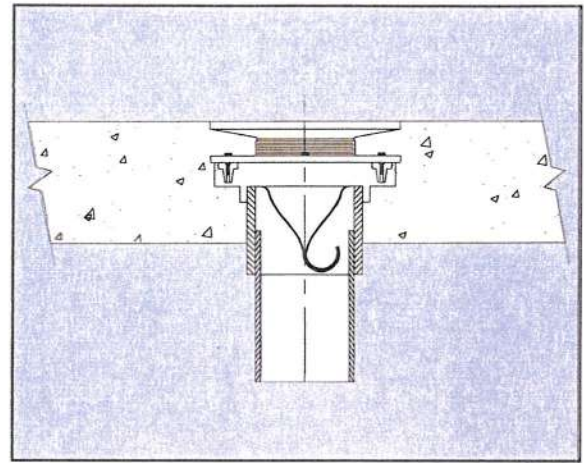
The above drawing shows how the Trap Guard™ returns to its original molded shape after the wastewater discharge is completed. The material has a built-in memory and will always return to its original molded shape. After the part is molded and cooled for 24 hours, the memory is set for the lifetime of the part. In its original closed position it does three important things, it prolongs the time it takes for the water in the trap to evaporate, prevents a sewer backup and will prevent dangerous sewer gases from entering a room through the floor drain.

Installation Options



Connect To
Plastic In
Underground

Connecting the floor drain to plastic pipe through a ground floor concrete slab.

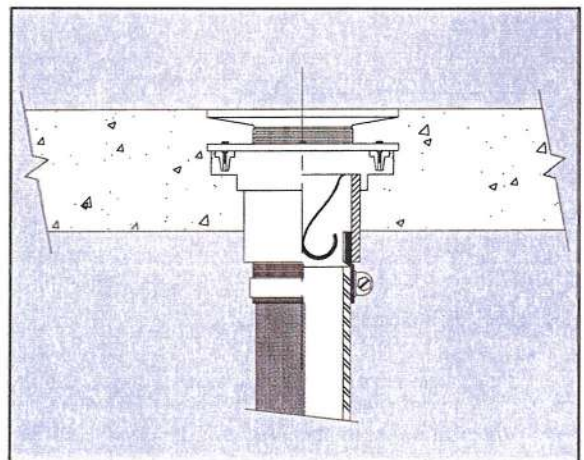


The ProSet floor drain has a 3" PVC plastic hub for a direct plastic pipe connection.

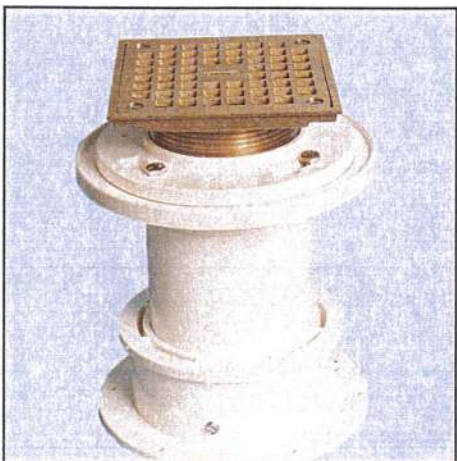


Connect To
Cast-Iron In
Underground

Connecting the floor drain to cast iron pipe through a ground floor concrete slab.

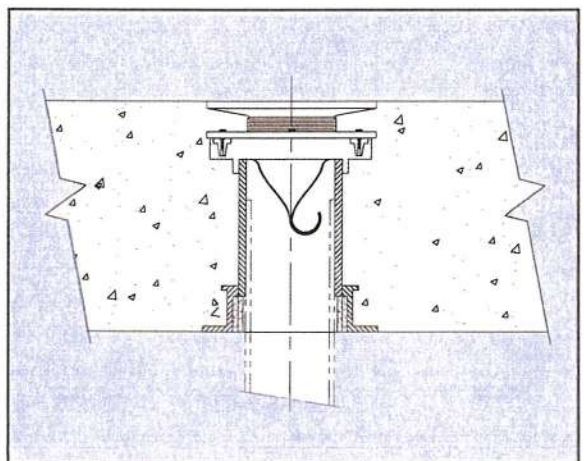


The ProSet floor drain has a 3" no-hub mechanical joint for cast iron connections.



Connect To
Plastic
Aboveground

Connecting the floor drain to plastic pipe in above ground concrete floors.

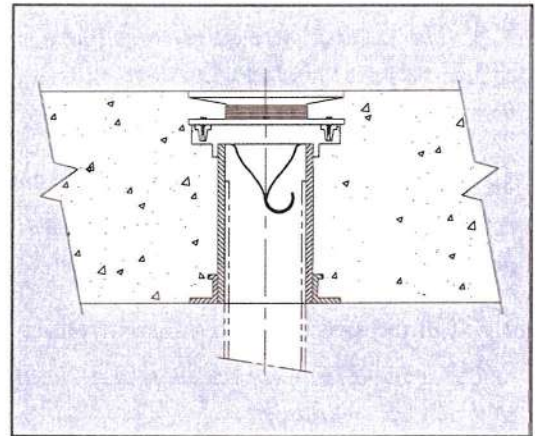


The ProSet floor drain stub has a built-in intumescent wrap strip for fire protection.

Installation Options



Connect To
Cast-Iron
Aboveground

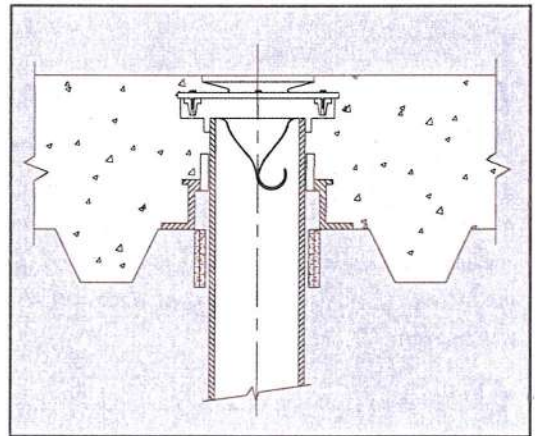


Connecting a floor drain to cast iron pipe in above the ground concrete floors.

The ProSet floor drain has a 3" liner pipe solvent cemented into the bottom socket connected to a Cast Iron P-Trap.

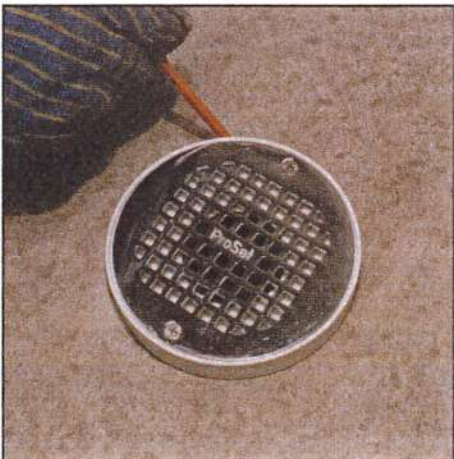


Connect To
Plastic In
Metal Deck

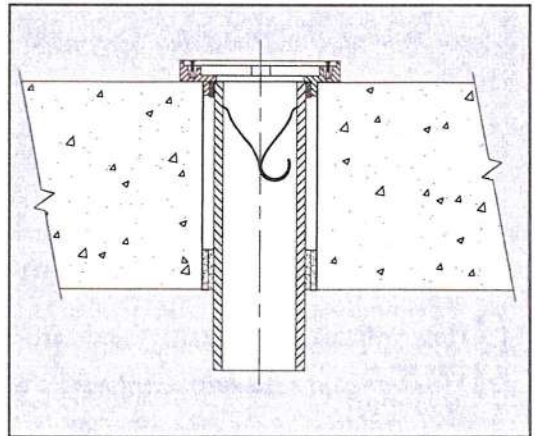


Connecting a floor drain to plastic pipe through a corrugated concrete slab.

The ProSet floor drain has a 4-1/2" diameter metal extension with built-in intumescent wrap strip for 3" plastic pipe connection.



Connect To
Plastic In
Cored Hole



Connecting a floor drain through a 4-1/2" diameter cored hole through existing or precast concrete.

The ProSet cored hole floor drain will set 3/4" above the floor. It can be cut into the floor or pour additional concrete.

Questions & Answers

1. **Q** How long will the material used in the trap guard last?

A The material used in the trap guard is an elastomeric flexible PVC material that has been used in many different types of plumbing products such as "O" rings, donuts and mechanical joint couplings. The material has been used successfully in different industries for over forty years.

2. **Q** How long will the flexible material maintain its curl seal?

A After the molding and cooling process, the memory becomes set for the Trap Guard. The material from that point on will never lose its memory.

3. **Q** Will the seal be broken if stringed items are not flushed completely through the trap guard?

A If stringed items such as mop strings, sticks or other such items get hung up inside the trap guard, the material will always maintain its memory and close around such items and will maintain its seal. However, it is recommended to flush out the trap guard periodically with clean water when the drain is subjected to such conditions.

4. **Q** Is the trap guard subject to a build up of lime scale?

A The smooth surface of the material would make it extremely difficult for any lime to adhere or build up on its surface.

5. **Q** Can a hot water heater relief valve discharge into the trap guard device without problems?

A If the discharge of a relief valve maintained temperatures of 200 degrees or more for longer than 15 to 20 minutes at the drain, the material could become pliable. However, it would be very difficult for a water heater to maintain a high temperature for a long period of time. The cold-water fill into the heater should significantly reduce the discharging water temperature. After such a discharge, the trap guard should be checked for proper operation. If the guard becomes distorted and does not close up properly, the trap guard can be replaced. (See instructions for replacing.)

6. **Q** Can a plumbing snake be used through the trap guard?

A If a plumbing snake is used to clear out a possible plugged up drain, it is recommended to lubricate and insert a 1-1/2' PVC pipe down through the flexible material then feed the cable through the PVC pipe.

7. **Q** Will the flexible material used in the trap guard support microbiological growth?

A The flexible material used in the trap guard has inherently resisted the growth of fungus and microbiological growth. The same material has been widely used in automotive applications such as bodyside moldings and windshield surrounds with no known microbiological effects whatsoever.

8. **Q** Can trash or food residues collect and remain inside the trap guard?

A This could happen without any harmful effects because of the memory closure of the trap guard. However, the trap guard should be properly maintained like any other floor drain or plumbing apparatus. The trap should be flushed out properly and periodically with clear water to clean out all foreign objects.

9. **Q** How will common cleaners and certain acid wastes affect the trap guard material?

A The trap guard has been tested with a variety of different chemicals. For a general guide showing the various chemical resistances to the trap seal, refer to the table on back page of this brochure.

10. **Q** How much water volume or flow will the 3" trap guard accommodate?

A The smooth surfaces of the device allows wastewater to freely and adequately discharge into the drain. It has been tested with a flow rate of more than 30 gallons per minute.

Chemical Resistance Chart Guide

Test Temperature
75°F (24°C)

Acids	Acetic, 10-50%	F	Organics and solvents	Acetone	X
	Benzoic	E		Alcohol, methyl	G
	Boric	E		Alcohol, ethyl	G
	Butyric	F		Alcohol, butyl	F
	Chloroacetic	E		Aniline	X
	Chromic	F		Benzene	X
	Citric	E		Carbon disulfide	X
	Fluoboric	E		Carbon tetrachloride	X
	Hydrobromic, 25%	E		Chlorobenzene	X
	Hydrochloric, 10%	E		Chloroform	X
	Hypochlorous	E		Ethyl acetate	X
	Lactic	E		Ethyl chloride	X
	Maleic	E		Ethylene dichloride	X
	Nitric, 5%	G		Ethyl ether	X
	Oleic	E		Formaldehyde, 37%	G
	Oleum	X		Gasoline	F
	Oxalic	E		Heptane	X
	Perchloric	G		Methylene chloride	X
	Phosphoric, 25%	E		Methyl ethyl ketone	X
	Phthalic	E		Nitrobenzene	X
Sulfuric, 10%	E	Phenol	X		
Tannic	E	Toluene	X		
Tartaric	E	Trichloroethylene	X		
Alkalies	Ammonium hydroxide	E	Gases	Carbon dioxide	E
	Calcium hydroxide	E		Carbon monoxide	E
	Potassium hydroxide	E		Chlorine, dry	G
	Sodium hydroxide	E		Chlorine, wet	F
Miscellaneous salts	Potassium dichromate	E		Hydrogen sulfide	E
	Potassium permanganate	G		Sulfur dioxide, dry	E
	Sodium cyanide	E		Sulfur dioxide, wet	X
	Sodium ferricyanide	E			
	Sodium hypochlorite	E			

E-excellent, no discernible attack; G-good, no significant attack; F-fair, mild attack, limited use; P-poor; X-unacceptable

LETTERS & NUMBERS FOR TRAP GUARD FLOOR DRAINS

The following is the part coding system used for ordering the drain of your choice with the proper part number

T=TRAP GUARD – 1st. NUMBER=PIPE SIZE – 2nd. NUMBER 5=SCH. 40 – NUMBER 63=ADJ. STRAINER OR NUMBER 65=NON-ADJ. STRAINER – NUMBER 0=UNDERGROUND DRAIN – H=HEIGHT F=FLOOR DRAIN – P=PLASTIC – CI=CAST IRON – SSW=FIRE RATED WRAP STRIP – CM=CORRUGATED CORRUGATED METAL – CH=CORED HOLES

T25630-F-P	(2" adj. floor drain for plastic pipe in underground)
T25630-F-CI	(2" adj. floor drain for cast iron pipe in underground)
T2563H-F-SSW	(2" adj. floor drain wrap strip stub for plastic pipe above ground floor)
T2563H-F-CI	(2" adj. floor drain for cast iron pipe in slab above ground floor)
T2563H-F-SSW-CM	(2" adj. floor drain wrap strip stub for plastic pipe above ground floor in corrugated metal deck)
T2565H-F-SSW-CH	(2" non-adj. floor drain wrap strip stub for plastic pipe above ground floor through cored holes)

TO CHANGE THE PIPE SIZE CHANGE THE FIRST NUMBER TO 3 FOR 3" OR 4 FOR 4".

ALL ABOVE PART NUMBERED DRAINS HAVE 5" ROUND NICKEL BRONZE STRAINER TOPS
ADD TO THE END OF THE ABOVE PART NUMBERS FOR OPTIONAL DRAIN TOPS OF ACCESSORIES

CP for chrome plated – PB for polished brass – SQ for 5" square top – FU for funnel extension

T25630-F-P-CP T25630-F-P-PB T25630-F-P-SQ T25630-F-P-FU

TRAP GUARD™ has US, Canadian and worldwide patents pending.

ProSet Systems, Inc. • 1355 Capital Circle, Lawrenceville, GA 30043

www.prosetsystems.com • 1-800-262-5355

03-05 • TG LIT 20